

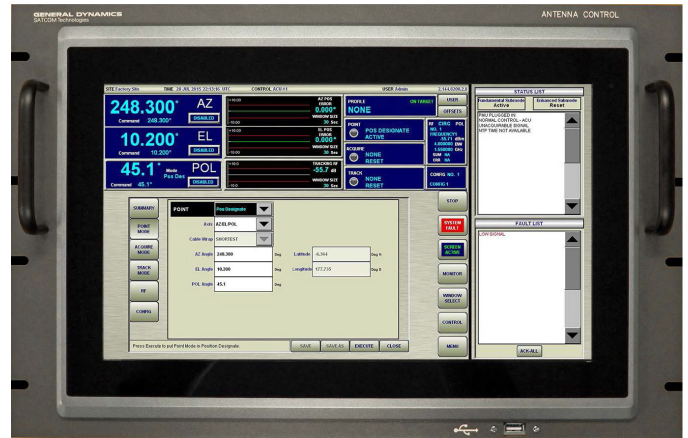
Antenna Control Products

Model 950A Antenna Control System Features, Benefits and Comparison Data

SATCOM Technologies' Model 950A Control Systems can be used with almost any limited motion antenna for precision satellite tracking applications.

The system comprises an Antenna Control Unit (ACU), Tracking Receiver Unit (TRU) and a Power Drive Unit (PDU) which are linked via dedicated Ethernet connections. This configuration provides flexibility in locating the key system components allows for variable separation distances and provides immunity to electrical ground plane transients.

The Model 950A is Intelsat- Standard A Compliant for great tracking performance, offers extensive modes for pointing, acquisition and tracking and its software is field-upgradable via a simple USB interface. In addition, the Model 950A is CE compliant for EU applications, features a touch-screen, large angle color display for modern user interfaces.



Options include fiber interfaces to support length cable runs and improved lightning protection and an internal receiver to reduce cost.

The Model 950A Controller comes with a three-year warranty, standard.

Model 950A Antenna Control System Features And Benefits

Feature	Model 950A	Benefit
Tracking	Intelsat - Standard A Compliant	Great Tracking Performance
Extensive Modes	Standard	Optional Modes now Standard
NTP	Standard	Accurate time; Necessary for multiple modes
1:1 Resolvers	Yes	Proven solution for many applications
Optical Encoders	25 bit	High Performance for narrow beam widths
Field SW Upgrade	Yes	Future feature additions if desired; Consistency across units
CE	Yes	EU applications
Fiber Ethernet	Standard Option	Enhanced Lightning Protection
SNMP	Q1 2017	Additional Interface Option
HTML Remote GUI	Q1 2017	Greater Flexibility

Model 950A Antenna Control System Feature Comparison - Model 950A to 7200 - What is improved?

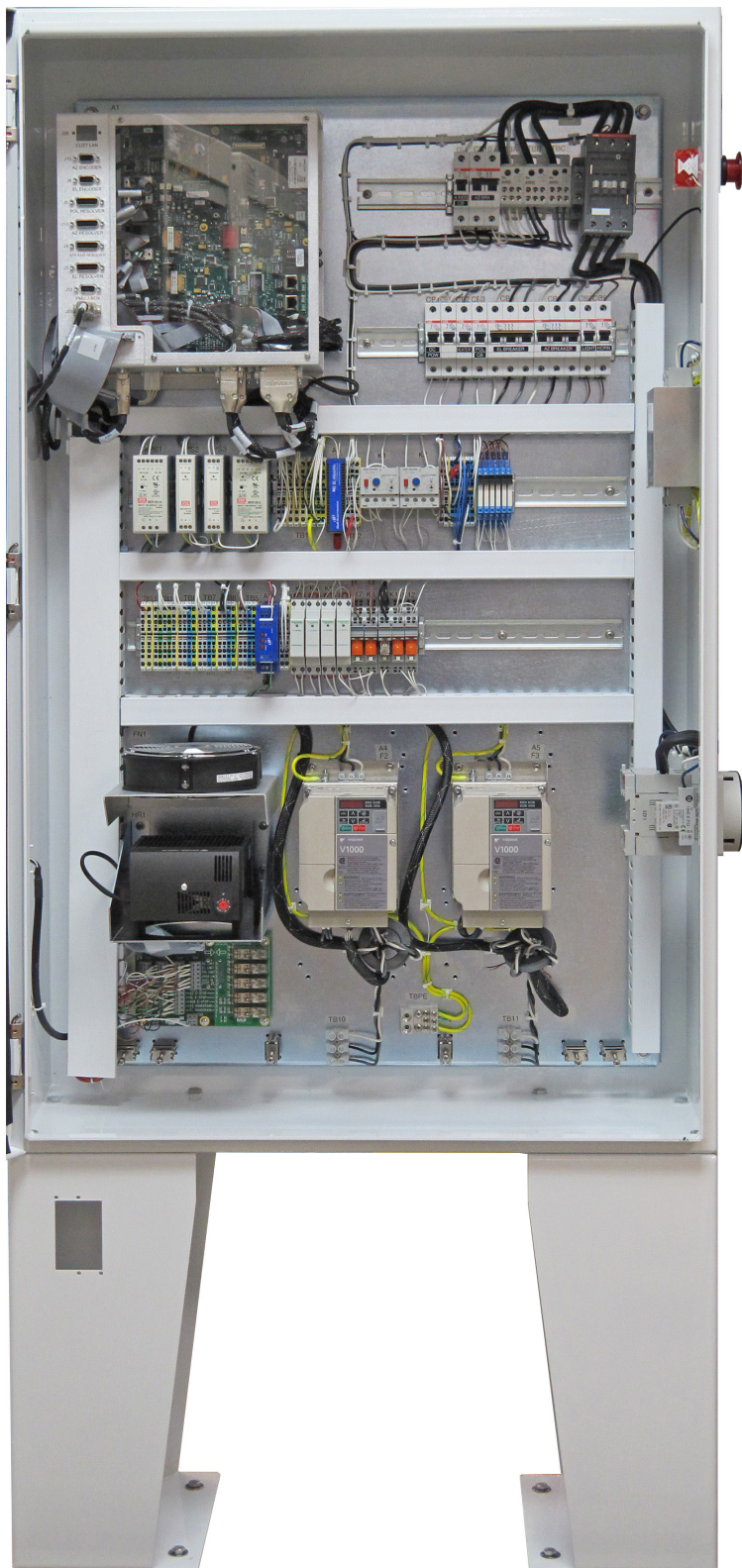
Feature	Model 950A	Model 7200	Benefit
Tracking	Intelsat - Standard A Compliant	Intelsat - Standard A Compliant	Great Tracking Performance
Modes	Extensive Modes	Extensive Modes	Optional Modes now Standard
NORAD TLE	Standard	Option	Supplement Tracking with TLE data
Table Track	Standard	Option	User provided ephemeris data
NTP	Standard	No	Accurate time; Necessary for multiple modes
1:1 Resolvers	Yes	Yes	Proven solution for many applications
Optical Encoders	25 bit	18 bit	High Performance for narrow beam widths
Field SW Upgrade	Yes	No	Future feature additions if desired; Consistency across units
CE	Yes	Yes	EU applications

Model 950A Antenna Control System Feature Comparison - Operation Friendly

User Interface			
Feature	Model 950A	Model 7200	Benefit
Color Display	Yes	No	Readability; Information Emphasis
Touch Screen	Yes	No	Modern UI for modern users
Full Status Messages	Yes	No	Immediate System Health & Configuration
Large Angle Display	Yes	No	Distance readability; easy to monitor

Model 950A Antenna Control System Feature Comparison - Architectural Improvements

Architecture			
Feature	Model 950A	Model 7200	Benefit
Ethernet/Fiber Option	Yes	No	Lightning resistance
Ethernet	100/10 Mbps	10 Mbps	Modern and faster - easier interface
System Cabling	Short	Long	Lower cable and installation cost
ACU - PDU Cables	Ethernet	Many; Distance limited	Distance-independent location; Highly flexible installation
External Receiver	Yes	Yes	Traditional Configurations supported; Flexibility
Integrated Receiver Option	Yes	No	Lowest Price Configuration
PDU Receiver Option	Yes	No	Flexible RF/IF cabling



PDU: The Model 950A Antenna Control Systems' PDU's are free-standing, housed in an NEMA 4 (IP66 equivalent) aluminum enclosure and contain the electrical and mechanical components necessary to move the antenna. The PDU supports both Inverter Drive and Single Speed Drive applications. The PDU contains an internal fan for ambient air circulation and "hot spot" avoidance and a thermostat controlled, internal heater for cold weather operations. An optional insulation kit extends to low temperature operation capabilities. Clean and efficient component layout aids in easy wiring for retrofits.

Typical Model 950A System Diagram

